



QuantaMesh

Ethernet Switch

QNOS5 Upgrading Guide

LY6/LY8/LY9/LY9A

LY3/LY2R/LB9/P05

CONTENTS

| | |
|--|----------|
| 1. Upgrade the Firmware | 3 |
| 1.1. Initialization Stage..... | 3 |
| 1.2. Upgrade the Firmware Image File | 4 |
| About QCT | 5 |



1. Upgrade the Firmware

The switch firmware is continuously being upgraded to meet more networking demands. It is recommended to upgrade the firmware to ensure that your switch has the latest firmware for optimum performance.

Note:

Before upgrading process, please make sure your firmware version on switch. Switch only supports to upgrade firmware from version 5.4.x.x to v5.4.x.x. Please use correct firmware to upgrading.

To upgrade to v5.4.05.00 and afterward versions, need to upgrade to v5.4.04.00 first.

1.1.Initialization Stage

1. Connect the TFTP server to the switch via the management port.
2. Set the service port IP address using the following commands:
 - a. Connect the console cable to the console port.
 - b. On a terminal emulation program (such as Teraterm or HyperTerm), set the baud rate to 115200 (115200, n, 8, 1).
 - c. When prompted for the username and password, input "admin" for the username and leave the password empty.
 - d. Set the service port IP address (in the example below, the service port IP address is set to 192.168.2.1):

configure

serviceport protocol none

serviceport ip 192.168.2.1 255.255.255.0

exit



```
User:admin
Password:

(Switch) #configure

(Switch) (Config)#serviceport protocol none

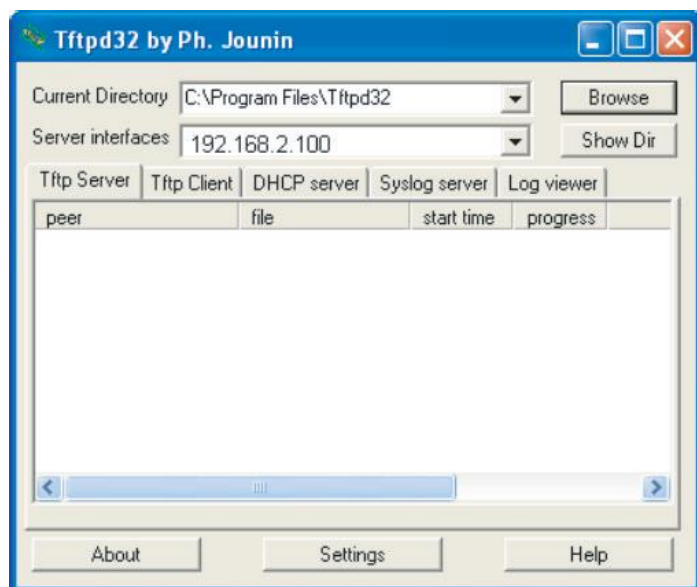
Changing protocol mode will reset ip configuration.
Are you sure you want to continue? (y/n) y

(Switch) (Config)#serviceport ip 192.168.2.1 255.255.255.0

(Switch) (Config)#exit

(Switch) #
```

3. Prepare the TFTP server and save the latest image file (*.stk) in its root directory (assuming that the IP address is 192.168.2.100).



1.2. Upgrade the Firmware Image File

Note:

If your switch is flash version, there is no “backup” command, please replace “backup” command to “active” since the switch only supports single image.

1. The switch supports two images, active and backup. Input the following command to download the image to backup image:

copy tftp://<server ip addr>/<file name> image backup

```
(Switch) #copy tftp://192.168.2.100/QNOS-p05-5.4.01.18.stk image backup
Mode..... TFTP
Set Server IP..... 192.168.2.100
Path..... ./
Filename..... QNOS-p05-5.4.01.18.stk
Data Type..... Code
Destination Filename..... backup

Management access will be blocked for the duration of the transfer
Are you sure you want to start? (y/n) y
```

2. Input the following command to set the backup image as the “next boot” image:

boot-system opcode backup

```
(Switch) #boot-system opcode backup
Activating image backup ..
(Switch) #
```

3. Reboot the switch.

reload

4. After the system boots up, input “**show version**” to display and verify the new firmware version.



About QCT



QCT (Quanta Cloud Technology) is a global datacenter solution provider extending the power of hyperscale datacenter design in standard and open SKUs to all datacenter customers.

Product lines include servers, storage, network switches, integrated rack systems and cloud solutions, all delivering hyperscale efficiency, scalability, reliability, manageability, serviceability and optimized performance for each workload.

QCT offers a full spectrum of datacenter products and services from engineering, integration and optimization to global supply chain support, all under one roof.

The parent of QCT is Quanta Computer Inc., a Fortune Global 500 technology engineering and manufacturing company.

<http://www.QuantaQCT.com>

United States QCT LLC., Silicon Valley office
1010 Rincon Circle, San Jose, CA 95131
TOLL-FREE: 1-855-QCT-MUST
TEL: +1-510-270-6111
FAX: +1-510-270-6161
Support: +1-510-270-6216

QCT LLC., Seattle office
13810 SE Eastgate Way, Suite 190, Building 1,
Bellevue, WA 98005
TEL: +1-425-633-1620
FAX: +1-425-633-1621

China 云达科技, 北京办公室 (Quanta Cloud Technology)
北京市朝阳区东三环中路 1 号 · 环球金融中心东楼 1508 室
Room 1508, East Tower 15F, World Financial Center
No.1, East 3rd Ring Zhong Rd., Chaoyang District, Beijing, China
TEL: +86-10-5920-7600
FAX: +86-10-5981-7958

云达科技, 杭州办公室 (Quanta Cloud Technology)
浙江省杭州市西湖区古墩路浙商财富中心 4 号楼 303 室
Room 303 · Building No.4 · ZheShang Wealth Center
No. 83 GuDun Road, Xihu District, Hangzhou, Zhejiang , China
TEL: +86-571-2819-8660

Japan Quanta Cloud Technology Japan 株式会社
日本国東京都港区芝大門二丁目五番八号
牧田ビル 3 階
Makita Building 3F, 2-5-8, Shibadaimon ,
Minato-ku, Tokyo 105-0012, Japan
TEL: +81-3-5777-0818
FAX: +81-3-5777-0819

Taiwan 雲達科技 (Quanta Cloud Technology)
桃園市龜山區文化二路 211 號 1 樓
1F, No. 211 Wenhua 2nd Rd., Guishan Dist.,
Taoyuan City 33377, Taiwan
TEL: +886-3-286-0707
FAX: +886-3-327-0001

Other regions Quanta Cloud Technology
No. 211 Wenhua 2nd Rd., Guishan Dist.,
Taoyuan City 33377, Taiwan
TEL: +886-3-327-2345
FAX: +886-3-397-4770

All specifications and figures are subject to change without prior notice. Actual products may look different from the photos.

QCT, the QCT logo, Rackgo, Quanta, and the Quanta logo are trademarks or registered trademarks of Quanta Computer Inc.

All trademarks and logos are the properties of their representative holders.

Copyright © 2014-2015 Quanta Computer Inc. All rights reserved.