

MRV for You Newsletter

Dear Reader

2007 continues to be a very good year for MRV, and it seems this tendency will remain stable for the coming months.

Over the last couple of months, MRV has successfully reached the exciting goal of enabling ultra long haul networking through the use of its revolutionary WDM Raman LambdaDriver amplifier module. Several of these have been installed in various locations around the world, to the full satisfaction of the customers.

Also, MRV continues its penetration of the datacenter networking and ASP/ISP domain, through its LambdaDriver® family of WDM and Optical Transport solutions and In-Reach Power Management Out-Of-Band-Management products, which bring to the hosting environment unprecedented solutions.

Recently, MRV has installed a very large WDM project in the USA, when the second largest hosting company there chose MRV for connecting their major datacenters for Internet provision, among other services.

During the NXTcomm show in Chicago, USA, by mid-June, MRV is expected to announce the Industry First Metro Ethernet Access device that enables end-to-end 10GE VPN as the next generation PREMIUM services for metro carrier – Look forward to receiving more exciting news

In this newsletter, you will find new and exciting information regarding:

New LambdaDriver solutions, including:

- **Raman amplifier** enables ultra long-haul DWDM applications
- **10GE wavelength** and dispersion tunability on a single WDM cards for up to 350 km

New customers' success stories

- **Metro Ethernet Access** solutions for 150 sites of Virtual Networking
- LambdaDriver for Enterprise **Fiber Optimization**

News about MRV new products certifications – NEBS + MEF 802.3AH Ethernet First Mile

Major events in which we participated and participate

- MRV at Anixter's Update 07 Roadshow
- NXTcomm show—next-generation global forum and marketplace for the carrier communications technology
- Optical Enterprise Event with Brocade
- Successful MRV's Optical seminar in Hungary

Should you want to share some info or comments with us, you are more than welcome to send everything to me.

Enjoy!
Dany Rafaelli



Products highlights

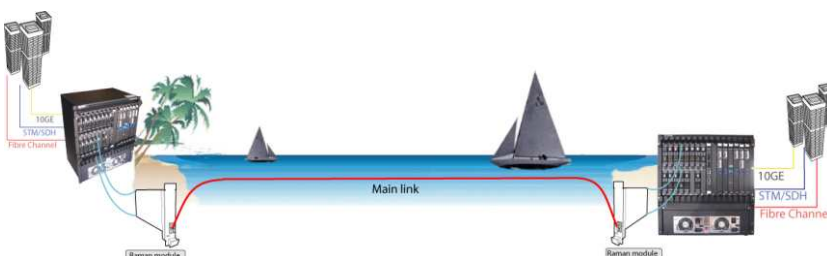
NEW RAMAN AMPLIFIERS FROM MRV ENABLE ULTRA LONG-HAUL DWDM APPLICATIONS

The LambdaDriver EM1600-OAR optical amplifiers offer ultra distance extension for 10/40/100 GBPS services, using RAMAN amplification without intermediate active locations.

The new ultra long-distance Optical Raman amplifier modules for MRV's Lambda Driver® DWDM transport platform, Raman amplifiers have become an essential component in long-haul optical networks that demand longer transmission distance. MRV's RAMAN amplifiers improve Optical Signal To Noise Ratio (OSNR) allowing improved performance of long-haul optical networks.

Main applications:

- Ultra long-haul transmission networks
- Upgrading present transmission systems to 10 or 40 Gbit/s



For more information: <http://www.mrv.com/product/mrv-ld-em1600-oar/>

10GE WAVELENGTH AND DISPERSION TUNABILITY ON A SINGLE WDM CARDS FOR UP TO 350 KM

MRV's innovative LambdaDriver WDM tunable cards offer extended metro and long haul tunable WDM networks up to 350 km. Two new cards for the LambdaDriver® WDM systems combine 10GE wavelength and dispersion tunability for distances up to 350 km and are remotely reconfigurable, reducing deployment and operational time and costs while increase reliability and scalability.

The LambdaDriver TM-DXFP20T and TM-DXFP35T cards enable ease of use, cost savings on sparing, and network planning simplification to help streamline DWDM network deployments. The new tunable cards support per wavelength fine-tuning of dispersion compensation, allowing dispersion balancing over long distance WDM networks.

For more information: http://www.mrv.com/product/mrv-ld-ld_10gbps/

For more info on the LambdaDriver WDM and Optical Transport: [LambdaDriver](#)



Customers' win stories

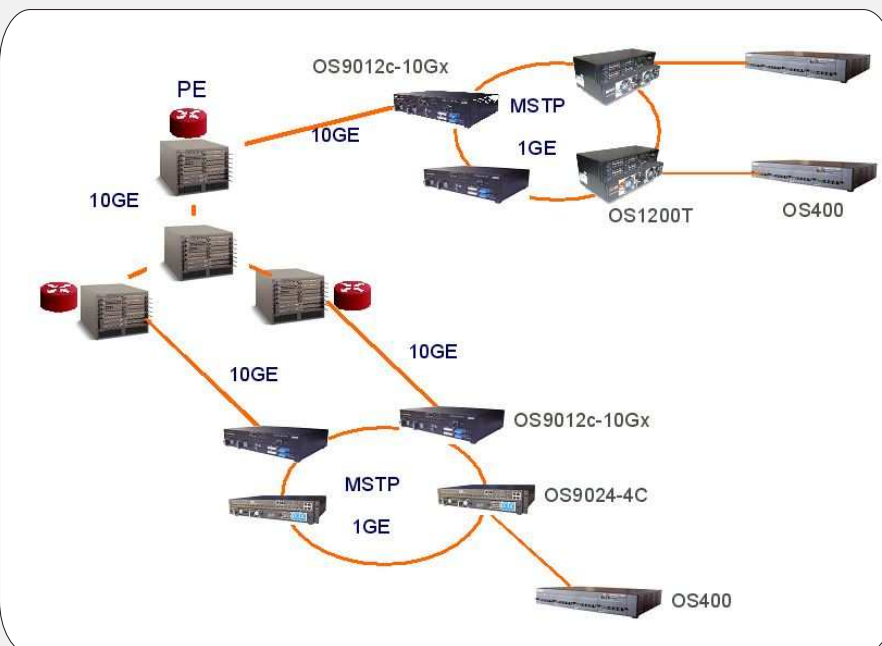
Metro Ethernet Access solutions for 150 sites of Virtual Networking

A local carrier in the province of Zeeland, in the Netherlands had a project: a Point-Of-Presence project sponsored by the European Community.

Delta needed a Point-To-Point networking topology and the schools' Telelearning, a Layer2+ with VPN and VPLS capabilities were required.

The solution Delta were looking for had to be interoperable with their already existing MPLS backbone network. Also, the customer needed flexibility so that the smaller sites enjoy rates of no more than 100M rates while the larger reach up to 1 GE. They chose MRV's OptiSwitch series of modular switching devices, together with the OS9000, MRV's Metro Ethernet Access solution.

This combination enabled the implementation of an intelligent, versatile, and powerful carrier class, Metro Ethernet platform with a comprehensive traffic management suite with advanced fiber connectivity that answered all Delta's specifications. Thanks to the quality of MRV's products and the professionalism of MRV's team, Delta made a strategic decision to complete their Alcatel backbone with MRV's Metro Ethernet access solutions, thus enabling the most advanced services based on the Metro Ethernet Forum (MEF) carriers specifications.]



LambdaDriver for Enterprise Fiber HQ Optimization

The Italian carrier Selex Communications uses MRV's solutions for their mission-critical applications, such as Business continuity, to deliver and satisfy huge bandwidth requirements and aggressive cost targets.

SELEX Communications, a Finmeccanica Company, is a qualified communications system supplier for military and civil customers, acting both in the Italian and in the foreign market.

SELEX Communications' expansion over recent years - both in size (they employ more than 5000 people) and in quality - has been backed up by significant growth in communication activities. Expanding a network always means a requirement for more fiber and more fiber deployment, something that can be very costly and cumbersome.

They had two buildings in Genoa, connected by 9 km of single mode dark fiber. They wanted to use the same data-center for both buildings, thus had to light a single fiber with multiple services and eliminating the need for buying and installing new fiber. After examining various solutions, offered by some of the most prominent vendors in the industry, Selex selected MRV's LambdaDriver® WDM solution to deliver their mission critical services between the buildings. The LambdaDriver 800, hosting 8 CWDM Mux/DeMux ports and TM2 and GM2 transponders enabled the lighting of the dark fiber as per their requirement. Selex chose MRV because of the high performance and reliability of the system, the possibility to upgrade the system from a cost effective CWDM to a denser DWDM in the future, if needed and at reasonable costs. In addition, MRV offered to train the company's employees, which ensures the company's independence in the future.



News

OS9000 to replace Riverstone's MPLS machine

As you probably know, Lucent bought Riverstone just before the merge with Alcatel. Riverstone's products at the core were RS15800 series and the products at the edge of Metro networks were the RS15100 series. Alcatel-Lucent terminated all the 15K series and replaced them with their SR series (7750). Alcatel is willing to replace all the 15K installed for free because they are not able to continue to provide support, and, within a few weeks, even to manufacture the 15K products. The RS15100 was an MPLS machine and the only MPLS machine today, in a size that can be installed in the field in Telco chassis, is MRV's OS9000 Metro Ethernet Aggregation solution.

This can open for us many new opportunities in the field!!! And it already did:

Just a nice example from Brazil: MRV just won a metro-Ethernet project in Brazil against Enterasys (Cabletron split: Riverstone and Enterasys): to achieve a result similar to what the RS1xxx/3xxx offered, we used a mix of OS9000 plus MR systems.

LambdaDriver NEBS certification

We are pleased to announce that MRV's LambdaDriver® LD400 joined its larger relatives LD1600 and LD800 wave division multiplexers in THE family of the systems found compliant with Network Equipment Building Systems ("NEBS") Level 3, the leading product safety and reliability standard for telecommunications equipment.

This certification means that MRV's LambdaDriver LD400 is now a recognized system that meets all safety standards required for use in US, tier one central office applications. To become certified at NEBS Level 3, the LambdaDriver WDM LD400 system passed strict physical, electrical and environmental tests and demonstrated that MRV's CWDM and DWDM solutions will operate safely and reliably in a central office environment.

Iometrix certifies MRV Metro Ethernet products for Ethernet in First Mile applications

OptiSwitch 9000 series and Fiber Driver successfully complete testing based on IEEE standards

For more Information: <http://www.mrv.com/newsroom/pr/pr-view.php/230>

Recently updated pages on our website

We have recently updated a few solutions pages on our website and invite you to come and visit:

LambdaDriver 10 Gbps solutions: http://www.mrv.com/product/mrv-ld-ld_10gbps/

OptiSwitch 900 Service Demarcation Service: <http://www.mrv.com/product/mrv-os-os900-sd/>

OS9000 Metro Ethernet Aggregation: <http://mrv.com/library/library.php?ctl=mrv-an-os-brochure>

OS300 Fast Ethernet and GE Optical Termination Unit: <http://www.mrv.com/product/mrv-os-os304/>

LambdaDriver Raman Optical Amplifier: <http://www.mrv.com/product/mrv-ld-em1600-oar/>

Events

NEWS

MRV at Anixter's Update 07 Roadshow

MRV is participating, as in recent years, in the event produced by Anixter Spain. We will tour Spain with Anixter, presenting our various solutions, especially MRV wireless TereScope FSO products. For more details on the roadshow:



<http://www.anixter.es/axecom/es.nsf/newsevents/update2007>

NXTcomm

June 18 – 21 - Chicago, USA; McCormick Place - Booth No 7824

At the next-generation global forum and marketplace for the business of information, communications and entertainment technology, MRV is presenting for "Best of Show" its latest and most innovative a carrier-class 10 Gigabit Ethernet Demarcation service platform. This unrivaled device enables premium revenue generating 10GE manageable services with extensive traffic management and end-to-end control for Service level conformance and is unique in the market.



Await sensational News !!



Optical Enterprise Event with Brocade

June 26-28, Frankfurt, Germany

A 3/4-day workshop on a cart course; We have the major part, together with 2 partners of ours and will present our various solutions; the target customers are finance organizations, universities, hospitals, municipalities, utilities, etc... We will also have an MRV's customer who will present his "Why MRV".

Successful seminar in Hungary

A full day seminar called Optical Networking Technologies, aimed at delivering updated information about trends and technologies on the optical networking field. About 80 networking professionals and decision makers attended the seminar, representing major companies from the telecom, government, utilities, transportation and enterprise sector. The event was very well received by the participants and gave us good visibility to important market players. The presentations were focused on MRV's optical networking solutions including the Fiber Driver, LambdaDriver, Metro FTTX, pluggables and the TereScope family. Here are a couple of comments samples we received: "I'd like to get the material, it was rich and fascinating", "Congratulations for the well organized and high standard presentations."



MRV Annual Partners' Meeting 2007

Save the dates!!! You don't want to miss it!!!

Ask your friends & colleagues and they'll tell you how interesting and pleasant it's been!

November 4th-8th, 2007

Expect all our details soon.



NEWS