

MobileMapper™ 6



Affordable GIS/GPS with Nothing Missing



A True Mobile GPS/GIS Receiver for Everyone



MobileMapper 6

MobileMapper 6 is an affordable and easy-to-use, professional GPS/GIS handheld receiver. It provides a complete set of all necessary features required of a mapping device for anyone who needs productive data collection and efficient asset management in the field.

Performance GPS

MobileMapper 6 GPS engine provides professional accuracy in real time and post-processing. This SBAS-enabled high-sensitivity GPS receiver computes and updates your position even in difficult conditions, such as under tree canopy and in urban surroundings.

Versatile Mobile GIS Solution

The MobileMapper 6 comes with Microsoft Windows Mobile 6 operating system, a color touch-screen, and it has Bluetooth for wireless connectivity. You can collect GIS/GPS points and maps via the GIS application of your choice: either a third party software or the proprietary Magellan Mobile Mapping application. You can also navigate, get your direction from the integrated e-compass, and communicate wirelessly.

Field-proven Rugged Design

MobileMapper fits comfortably in one hand and weighs less than eight ounces (224g). MobileMapper 6 is made for intensive outdoor use and can be dropped in the dirt or into water again and again without harm. It keeps working, and you won't lose any data.

Feature-rich Mapping Device

Embedded speaker and microphone make it easy to record audio files, for a rich archive of locations and projects. You can take pictures using the integrated 2-megapixel digital camera, use the e-compass to determine the camera orientation at the time the picture is taken, and use other Windows Office Mobile applications, all with a single device.

Easy-to-use Mobile Mapping Software

Magellan's Mobile Mapping software provides easy-to-use and simple yet professional and effective GIS data collection capabilities. You can select this optional Mobile Mapping application to create and update maps for analysis and maintenance in a standard GIS system. Magellan software is ideal for such GIS professionals as foresters, farmers, safety personnel, utility workers, and anyone who manages positioned assets in the field.

The Magellan Mobile Mapping application includes all GPS features that GIS professionals really need without the burden of complicated and rarely used functions. The software is very intuitive and easy-to-use, requiring a minimum of training.

Boost your Accuracy with the New Post-processing Feature

The new MobileMapper 6 Office tool can be used to differentially post-process raw GPS data collected with the Magellan Mobile Mapping software. Through post-processing, the positions of every GIS feature you collect in the field can be improved to 1-2 meters accuracy.

Thanks to BLADE™ Magellan unique processing algorithm, post-processing raw data with MobileMapper 6 Office is extremely efficient and straightforward. Through an Internet connection, MobileMapper 6 Office can automatically find and download the base data files that will match the collected raw data. MobileMapper 6 Office also allows project preparation, synchronization with Mobile Mapping software and the management of your GIS maps and data.

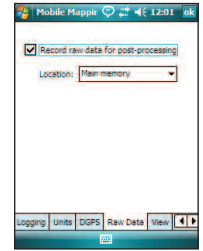
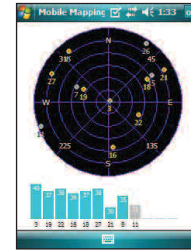
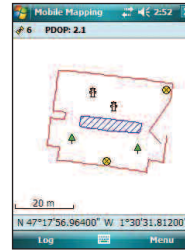


Key Software Features and Applications

Software Features

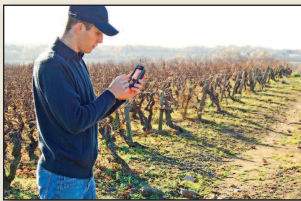
The Magellan Mobile Mapping application offers powerful yet easy-to-use GIS data collection features. Key GIS data-logging capabilities include:

- GPS data collection and navigation capabilities
- SBAS corrections activation and de-activation
- Raw data collection for post-processing
- Support for vector layers in 2D/3D shapefile format for point, line and area collection
- Continuous or vertex data collection and averaging
- Area and perimeter calculation in the field for real-time area determination
- Structured attribute information definition for each feature, including text, numeric, date, area, perimeter, picture or voice-tag attributes
- Support for the built-in digital camera for image association with a particular feature
- Possibility to offset measurements for all feature types including point, line and area for logging hard-to-reach features
- E-compass reading for offset bearing calculation or picture azimuth measurement
- Nesting, allowing additional points collection while mapping a line or area
- Support for raster data geo-referenced images in TIFF, JPEG and Bitmap formats
- Geo-referencing of raster images in the field
- Interface to cable locators (3M Dynatel)
- Navigation and guidance to an existing feature for the purpose of GIS data maintenance
- Pre-defined (national and international) and user-defined / custom coordinate systems
- International languages support
- Microsoft ActiveSync communication feature for data transfer and synchronization between the GPS receiver and a PC platform



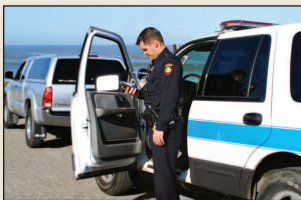
Forestry and Environment

The highly sensitive MobileMapper 6 GPS receiver together with the easy-to-use Mobile Mapping application performs very well in difficult signal environments such as under dense foliage. Applications include management of forestry, wetland delineation, environmental protection or vegetation mapping.



Agriculture

Ideally suited for agricultural applications, MobileMapper 6 gives you the power to make accurate area and boundary measurements on native, fallow or cultivated parcels of land. MobileMapper 6 is an excellent tool for mapping fields that may be eligible for subsidies payments or insurance.



Public Safety

The rugged exterior and versatility of software applications make the MobileMapper 6 the first choice for Public Safety. Creation of first-response plans, mapping fire boundaries, crime location, disease incidence and storm damage mapping are conveniently done on-site with one simple tool.



Utilities and Oil & Gas

The MobileMapper 6 is able to take any supported mapping file into the field, update it and transfer it back to the office GIS database. This enables any utility worker to navigate to field infrastructure, update the GIS data in the field, and easily transfer this file back to the office.

APPLICATIONS

MobileMapper 6 Technical Specifications

MobileMapper 6 Key Features

- Extremely rugged and waterproof to IPX7 standards
- Integrated, low-power, high-sensitivity antenna for clear reception and longer battery life
- Windows Mobile 6 operating system
- SiRFstarIII™ delivers fast GPS position acquisition
- Integrated 2-megapixel digital camera to capture pictures of the collected GIS features
- E-compass for offset and picture direction measurements
- AA batteries for easy replacement in the field
- Bluetooth technology for wireless communication
- SD card slot
- QVGA color touch screen

Package Content

- GPS receiver
- USB data cable
- 2 x AA batteries
- Spare stylus (5)
- Getting Started Guide CD

Optional Accessories

- External GPS antenna
- Windshield mount
- Cigarette lighter power adapter
- AC power adapter
- Carrying case

Software Options

- Magellan Mobile Mapping software for MobileMapper 6
- Post-processing feature and office tool for Magellan Mobile Mapping software
- DigiTerra Explorer software (bundled with MobileMapper 6)
- ESRI ArcPad software (bundled with MobileMapper 6 for the USA only)

Operating System

- Microsoft Windows Mobile version 6
- Processor: 400 MHz
- Bluetooth wireless technology
- USB interface (device only)

GPS Characteristics

- GPS chipset: SiRFstarIII
- GPS accuracy
 - SBAS: 2-5 m⁽¹⁾
 - Post-processing: 1-2 m⁽²⁾
- Channels: 12 (L1 C/A code)
- Antenna type: Patch
- Supported protocols: NMEA and SiRF
- Update rate: 1 Hz

Windows Mobile Software

- ActiveSync
- Calculator
- Calendar
- Notes
- File Explorer
- E-mail messaging
- Internet Explorer
- Office Mobile: Word, Excel, PowerPoint
- Pictures & Videos Viewer
- Windows Media Player...

Physical Characteristics

- Size: 14.6 cm x 6.4 cm x 2.9 cm (5.75 in x 2.5 in x 1.13 in)
- Weight with batteries: 224 g (7.9 oz)
- Screen size: 2.7" (6.86 cm)
- Screen resolution: QVGA (240 x 320 pixels)

User Interface

- Touch screen
- Virtual keyboard
- Handwriting recognition
- Audio notifications
- Screen backlight

Environmental

- Waterproof to IPX7
- Temperature: -20°C to 60°C
- 1 meter drop

Memory Characteristics

- SD memory card slot
- NAND Flash memory: 128 MB
- SDRAM memory: 64 MB

Power Characteristics

- Battery type: 2 x AA
- Battery life: 10 hrs

Other Features

- MobileMapper Today user-friendly tool bar
- Camera: Integrated 2-megapixel CMOS
- Loudspeaker and microphone
- LED Flashlight
- Sensors: e-compass, g-sensor, barometer
- Language support: English, French, German, Greek, Italian, Japanese, Korean, Portuguese, Simplified Chinese, Spanish, Traditional Chinese

Mobile Mapping Contact Information:

In France +33 2 28 09 38 00 ■ Fax +33 2 28 09 39 39
In Russia +7 495 980 5400 ■ Fax +7 495 981 4840
In the Netherlands +31 78 61 57 988 ■ Fax +31 78 61 52 027
Email mobilemappingemea@magellangps.com

In Singapore +65 9838 4229 ■ Fax +65 6777 9881
In China +86 10 6566 9866 ■ Fax +86 10 6566 0246
Email mobilemappingapac@magellangps.com
www.pro.magellanGPS.com

